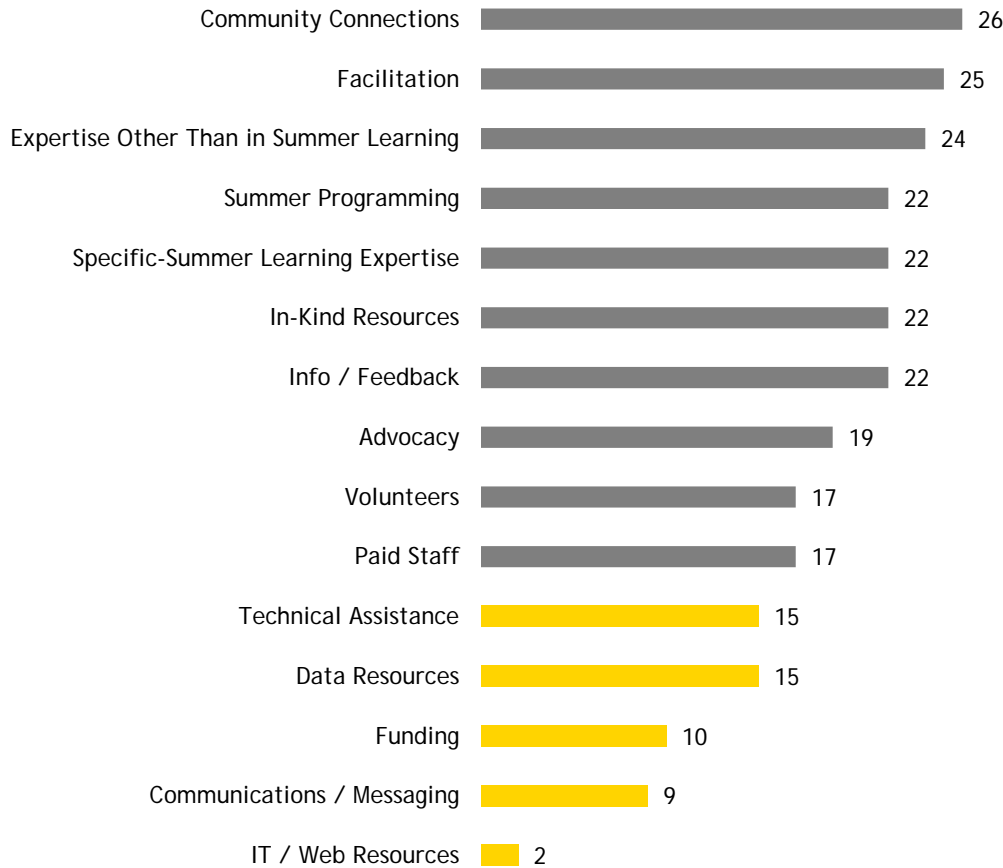
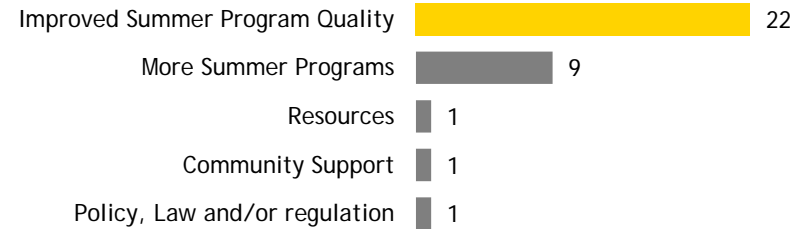


Summer Matters Network PARTNER Analysis

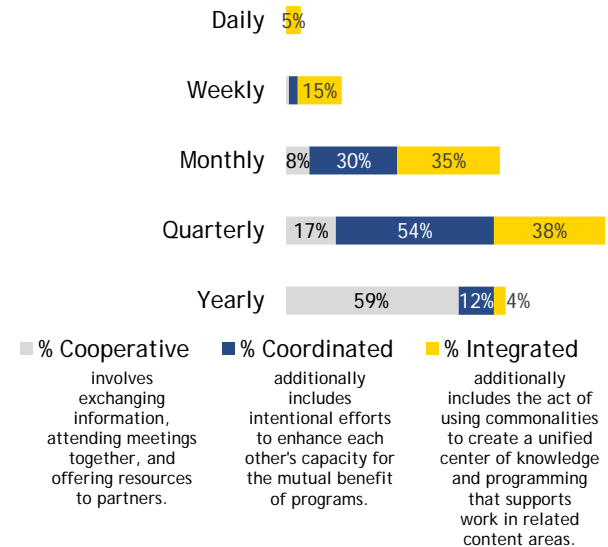
TYPES OF CONTRIBUTIONS NETWORK MEMBERS HOPE TO MAKE TO SUMMER LEARNING



OUTCOMES IN SUMMER LEARNING FIELD, THAT ARE MOST IMPORTANT FOR NETWORK MEMBERS



FREQUENCY AND NATURE OF RELATIONSHIPS AMONGST CURRENT NETWORK MEMBERS



8%
DENSITY

Percentage of ties present in relation to the total number possible.

59%
DEGREE CENTRALIZATION

The lower the centralization score, the more decentralized.

77%
TRUST

The percentage of how much members trust one another.



NETWORK MAP

Each organization in the network map is represented as a circle (node). The lines between each organization indicate the presence of a relationship based on the survey responses. Organizations with more connections are more central to the functioning of the network and appear toward the middle of the map. If an organization did not complete the survey, they may still appear on the map if another organization completed the survey and indicated that they had a relationship.

